

LCG-HB

50W to 300W

THE **L** **E** **D** ADVANTAGE

# High Bay

LED High Bay  
Lighting



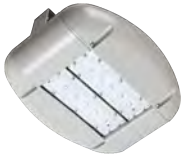
# LED HIGH BAY LIGHTING

☑ **LCG-HB** 50W to 300W

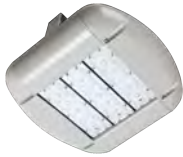
Project Name

Notes

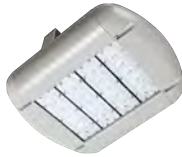
## PRODUCT IMAGES



LCG-HB 50W



LCG-HB 80W  
LCG-HB 100W



LCG-HB 120W



LCG-HB 160W



LCG-HB 200W



LCG-HB 250W



LCG-HB 300W

## APPLICATIONS

Ideal one-for-one replacement of conventional lighting systems such as HID and fluorescent. Applications include manufacturing, warehousing and other large indoor and outdoor applications.

## FEATURES

Lightweight aluminum heat sink designed to perform at warm ambient temperatures. Thermal engineering for maximum natural convective cooling.

70% lumen maintenance at >50,000 hours; predicted life of more than 100,000 hours.

Thermally protected driver standard with 0-10V dimming.

## LISTINGS / CERTIFICATES

C-UL US certified to US and Canadian safety standards. Damp location listed IP65. For use in ambient operating temperatures ranging from -40°C to 40°C.

DesignLights Consortium® (DLC) qualified product. Not all versions of this product may be DLC qualified. Please check the DLC Qualified Products List at [www.designlights.org/QPL](http://www.designlights.org/QPL) to confirm which versions are qualified.



## WARRANTY

Five-Year Limited Warranty

## SPECIFICATIONS

Ordering Information: Example: [LCG-HB] - [120W] - [40K] - [T5] - [U] - [D]

Model #	Input Power	CCT	Rated Lumens	Distribution Optics	Voltage	Finishes	Options
LCG-HB	[50W] 50W [80W] 80W [100W] 100W [120W] 120W [160W] 160W [200W] 200W [250W] 250W [300W] 300W	[30K] 3000K [40K] 4000K [50K] 5000K [57K] 5700K [60K] 6000K	5,000 lm 8,000 lm 10,000 lm 12,000 lm 16,000 lm 20,000 lm 25,000 lm 30,000 lm	[T2] Type II [T3] Type III [T5] Type V	[U] 110-277V [H] 347-480V	[BK] Black [BZ] Bronze [GY] Grey [WT] White	[-] Non dimming [D] 0-10V dimming